



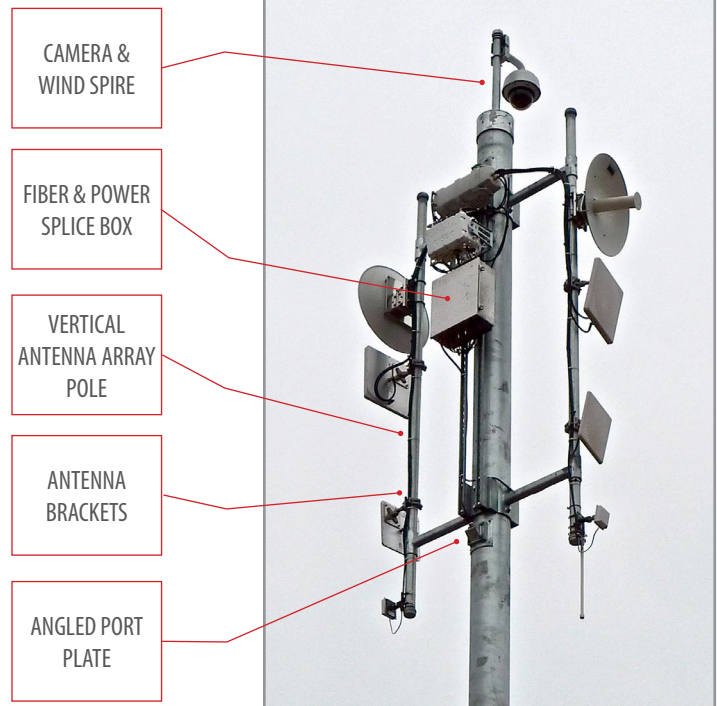
WFR MODULAR INTEGRATED POLE

WFR-MIP

MODULAR INTEGRATED SERVICE POLE FOR ANTENNA ARRAYS, PTZ CAMERAS, MULTI-BAND RADIO AND ACCESS POINTS, HYBRID FIBER SPLICING AND POWER TERMINATIONS. PHOTOVOLTAIC AND WIND INCORPORATION FOR REMOTE SITE OFF-GRID LOCATIONS.

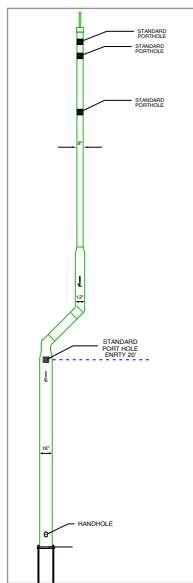
FEATURES & BENEFITS

- Hot dipped galvanized round stepped steel sections manufactured of API 5LX-42 & API 5LX 50 pipe
- Mean tensile strength of 85,000psi
- Square base plate material of ASTM A36
- Custom manufactured in compliance of the 2007 CBC, 2006 IBC - 1604.1, 1609.1.1
- Wind calculated ANSI/TIA/EIA-222-G W/ Wind, Exposure C Kz = 1, Topo Class 1, Tower Class II
- State of California earthquake compliance
- Seismic Data: Ss=0.1.5, S1=0.733, Seismic Design Class D, Cs=0.667
- Welding Per AWS D1.1 Latest Edition
- Included anchor bolts F1554 Grade 55
- Site specific handhole locations
- Interior strain relief cabling hooks
- Full compliment of tower leveling hardware



MIP SPECIFICATIONS

- Pole Lengths : 25'/35'/45'/55' (7.62m/10.67m/13.72m/16.76m)
- Straight & Offset



OPTIONAL ACCESSORIES

- Vertical Axis Wind Turbine Spire
- PTZ / Pan Tilt Zoom Vertical Camera Mount
- Upper and Lower Vertical Antenna Bracket
- Photovoltaic Front or Side Mounting Bracket
- Ingress / Egress Angled Port Plates
- Buried Fiber Splice Box
- Weatherproof Fiber Splice / Breakout Case
- Buried Battery Backup Container
- LMR Antenna Radio Connection Package
- Vertical Component Mount Channel Kit
- Complete Bracket Assembly Stainless Steel Hardware Kit

